

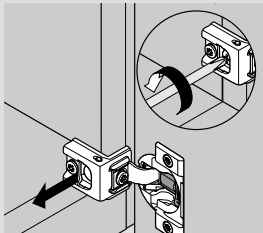
## HINGE ANGLE RESTRICTION CLIPS INSTALLATION INSTRUCTIONS

# COMPACT BLUMOTION — Angle restriction clip

Assembly instructions

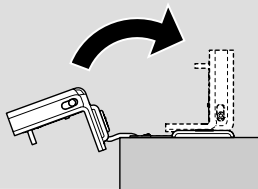
### Step 1 — Remove door

Loosen and remove installation screws.



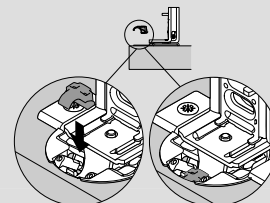
### Step 2 — Rotate hinge arm

Rotate hinge arm to closed position.  
“click”



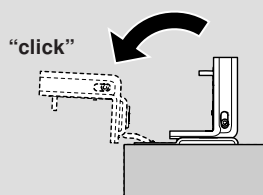
### Step 3 — Insert angle restriction clip

Insert angle restriction clip (38C315B3.1) into base of hinge arm.



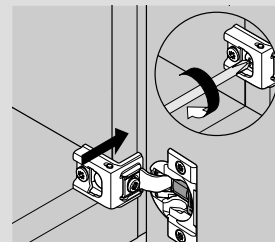
### Step 4 — Rotate hinge arm

Rotate hinge arm to open position to secure.



### Step 5 — Reattach door

Align door and reattach by inserting and tightening installation screws.



**NOTE:** Restriction clip limits door opening angle to 86°

Subject to technical modifications without notice. © 2013  
LIT.HNG5500.02.13

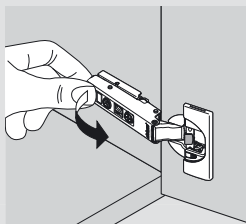
**blum**

# CLIP top 110° — Angle restriction clip

Assembly instructions

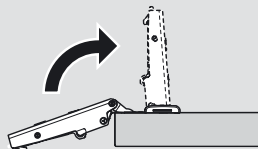
### Step 1 — Remove door

Remove hinge from CLIP mounting plate.



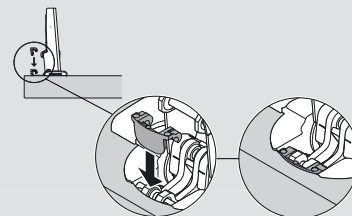
### Step 2 — Rotate hinge arm

Rotate hinge arm to closed position.



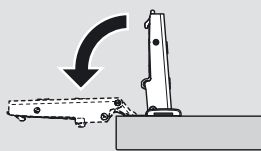
### Step 3 — Insert angle restriction clip

Insert angle restriction clip (70T3553) into base of hinge arm and secure.



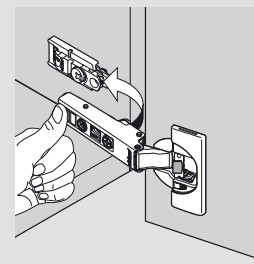
### Step 4 — Rotate hinge arm

Rotate hinge arm to open position.



### Step 5 — Reattach door

Align door and reattach to CLIP mounting plate.



**NOTE:** For use with all CLIP top 110° and 110°+ hinges (this includes CLIP top BLUMOTION)

Subject to technical modifications without notice. © 2011  
LIT.HNG5201.07.11

**blum**